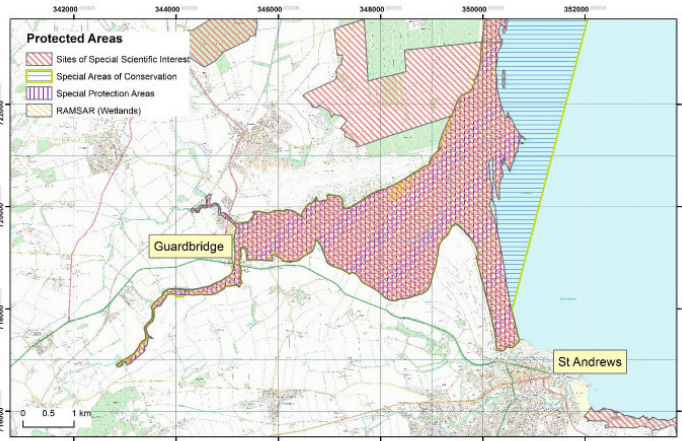




# Vertically Integrated Project

## Looking After Eden

This VIP was launched in Semester 2 (2022/2023)



© Crown Copyright/database right 2016. An Ordnance Survey/EDINA supplied service. Contains public sector information licensed under the Open Government Licence v3.0.

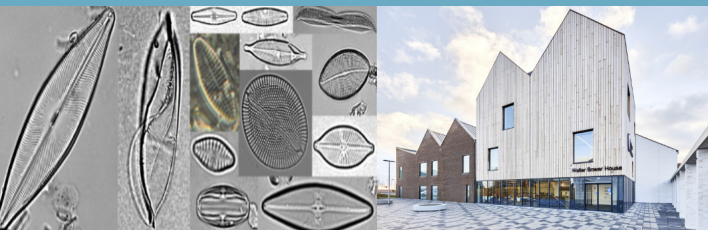
### Current Aims

- Collect evidence & gain understanding of the Eden Estuary
- Create a resource bank to collate information on the Estuary
- Form collaborations with other scholars and stakeholders

### Who is Involved?

- Staff & students from the Schools of Geography & Sustainable Development, Biology, Earth Science, International Relations, and Art History
- Stakeholders sharing an interest in the Eden Estuary

For more information, contact Dr Antje Brown, School of Geography & Sustainable Development at [ackb@st-andrews.ac.uk](mailto:ackb@st-andrews.ac.uk)



### So Far...

To better understand the Estuary, and the broader system it is a part of, we have been on a variety of field trips to:

- The Eden Estuary Centre
- Eden Campus
- The mouth of the Estuary
- West Sands

### Key Questions

- What do we know about the Estuary?
- Who has an interest in the Estuary and why?
- What challenges and opportunities are there for the Estuary?
- What can we do to support the conservation and long-term sustainability of the Estuary?